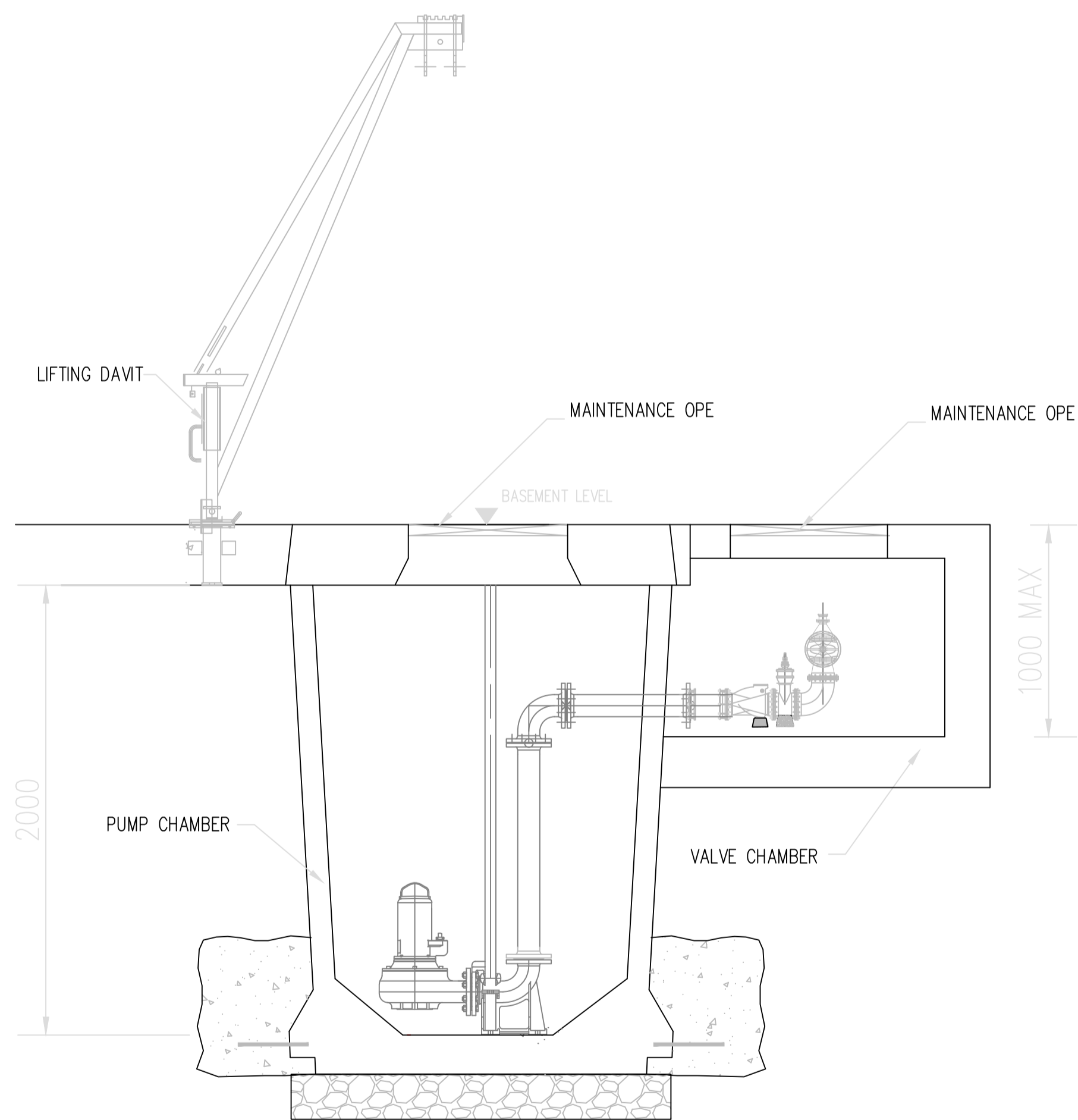
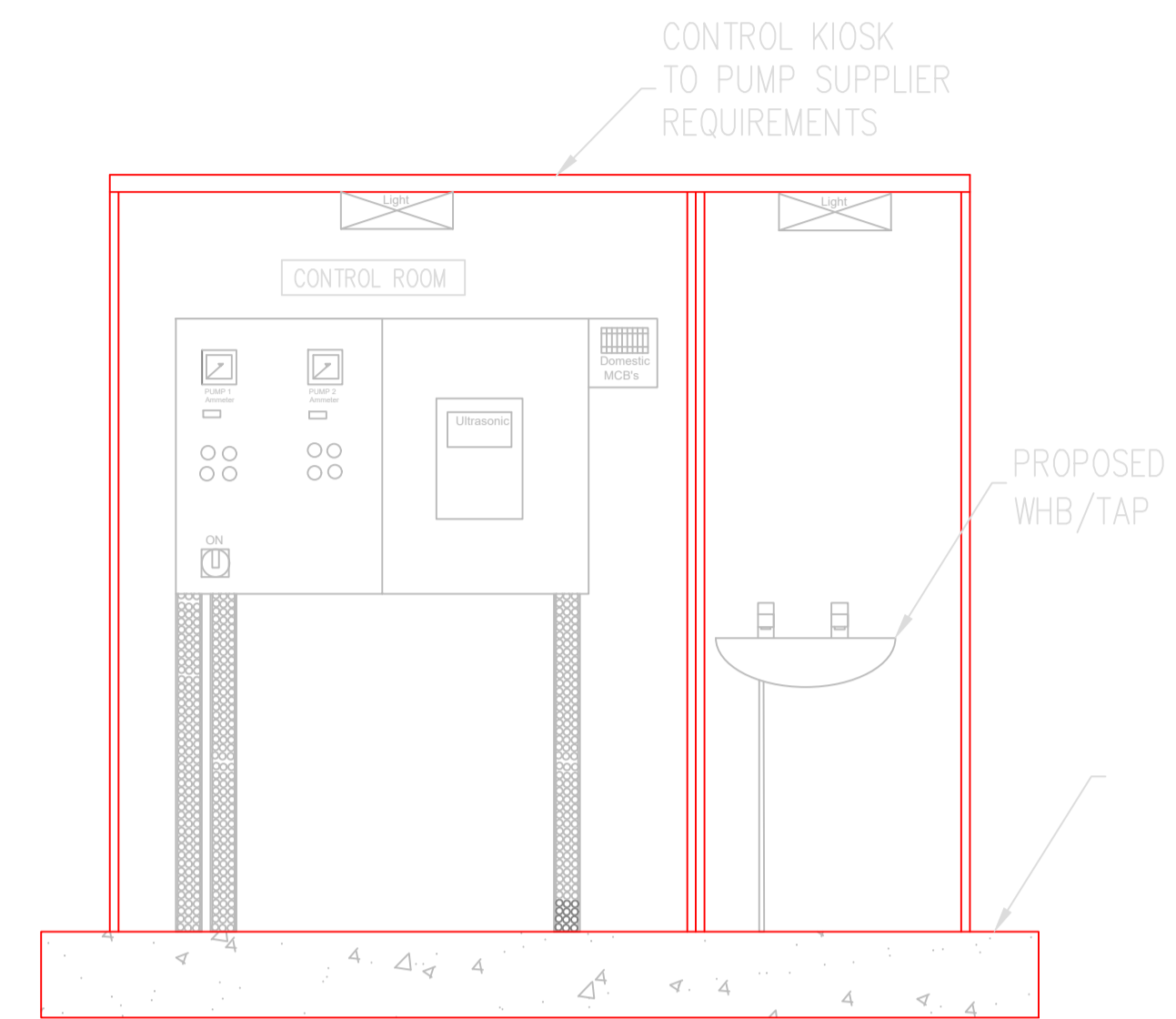


PLAN OF BASEMENT FOUL PUMP STATION
SCALE 1:20



BASEMENT FOUL PUMP STATION -SECTION A-A
SCALE 1:20



TYPICAL CONTROL KIOSK

NOTES:

1. ALL DIMENSIONS ARE IN MILLIMETRES UNLESS OTHERWISE NOTED.
2. PUMPS SHALL BE INSTALLED TO SUPPLIER'S REQUIREMENTS.
3. ALL DUCTILE IRON PIPE WORK AND FITTINGS TO BE IN ACCORDANCE WITH IS EN 598.
4. PRE-CAST CONCRETE CHAMBERS MAY BE USED SUBJECT TO APPROVAL FROM THE ENGINEER.
5. ALL GATE VALVES TO BE CLOCKWISE CLOSING.
6. WET WELL TO BE IN ACCORDANCE WITH BS EN 1992-3.
7. COVERS TO BE SIZED TO ALLOW ADEQUATE SPACE FOR PUMP REMOVAL. MINIMUM 1400x800mm.
8. CHAMBER COVERS WITH A CLEAR OPENING EXCEEDING 1000mm SHALL CONFORM TO BS 9124.
9. ALL CONCRETE TO BE IN ACCORDANCE WITH IS EN 206.
10. ALL INTERNAL VALVES AND FITTINGS TO BE TO SPECIALIST DESIGN AND SUBJECT TO APPROVAL BY ENGINEERS.

PUMP SPECIFICATION

1. DUTY & STANDBY PUMP ARRANGEMENT
2. EACH PUMP TO BE FITTED WITH MACERATOR
3. PUMPS SET TO DISCHARGE AT 1.0 l/s (TBC BY PUMP SUPPLIER)

Planning Drawing
Not for Construction
This drawing has been issued for information purposes only and must not be used for construction under any circumstances

REV. NO.	DATE	REVISION/NOTE
A	2020-07-26	REISSUED FOR PLANNING

NOTES

1. For setting out refer to Architect's drawings.
2. This drawing to be read in conjunction with all other Architectural and Engineering drawings and all other relevant drawings and Specifications.
3. DO NOT SCALE THIS DRAWING. Use figured dimensions only.
4. No part of this document may be reproduced or transmitted in any form or stored in any retrieval system of any nature without the written permission as copyright holder except as agreed for use on the project for which the document was originally issued.
5. Ordnance Survey Ireland Licence Number EN 0074020

REV. NO.	DATE	REVISION/NOTE	APP. BY	CHECKED BY

Client	Bartra Property (Castleknock) Limited
Project	Brady's Public House Old Navan Road, Dublin 15, D15
Title	Basement Foul Pump Station
Drawn By	DF
Checked By	GL
Approved By	NB
Date	Oct 2018
Scale	1:20 @ A1
Design No.	B094-011
Revision	A

CS Consulting Group
DUBLIN | LONDON | LIMERICK

Head Office
19-22 Dame Street, Dublin 2.
T: +353 (0)1 5480863 F: +353 (0)1 9011355
E: info@csconsulting.ie
W: www.csconsulting.ie

Quality Environment I.S. EN ISO 9001:2008
Energy I.S. EN ISO 14001:2004
NSAI Certified Health & Safety OHSAS 18001:2007